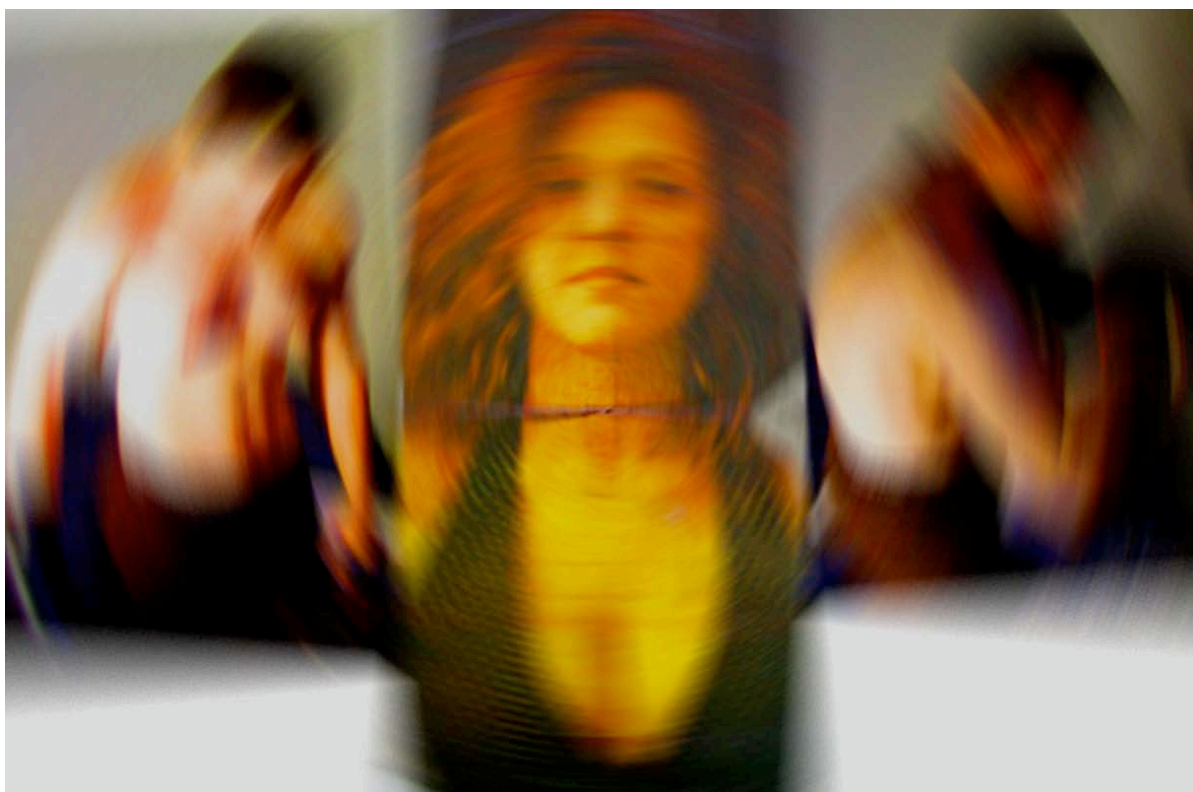


*C h r i s t i n e   W h i t t a k e r*

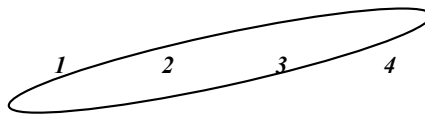


*F i r e   a n d   W a t e r   2 0 0 3*



*C h r i s t i n e   W h i t t a k e r*

*Performance, Installations, and Multi-Media Sculpture*



*P. O. Box 1229 Church Street Station New York, N.Y. 10008 -1229*

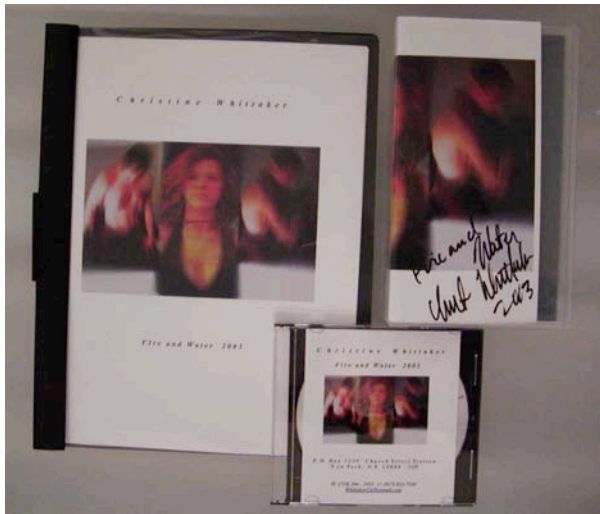
*H: (718) 361-2381 [WhittakerC@Hotmail.com](mailto:WhittakerC@Hotmail.com)*



*Fire and Water Performance Proposal:*

<i>Promotional Materials and example invitation</i>	<i>7</i>
<i>Fire and Water Concept</i>	<i>9</i>
<i>Fire and Water Proposal projected text short example</i>	<i>8</i>
<i>Fire and Water Proposal (Front View)</i>	<i>10</i>
<i>Fire and Water Proposal (Top View)</i>	<i>12</i>
<i>Fire and Water Proposal Details (Projection screens, figure, cellist)</i>	<i>14</i>
<i>Fire and Water Proposal Budget</i>	<i>16</i>
<i>Fire and Water Performance projected Verse in its entirety</i>	<i>17</i>
<i>Performance Credits</i>	<i>24</i>





**Pictured to the right:**

**Book:**

*Pictured at the right is the book you are now looking through now.*

**Videotape:**

*The Videotape is a 22-minute tape with the sound and words (that will be used in the performance).*

**CD:**

*The Cd is an example of the sound that will be used during the performance.*

**Pictured Below: Detail of a possible invitation.**

# Fire and Water

By Christine Whittaker

***Fire and Water :***



*A 43-minute performance piece composed of a cellist two large-scale projections screens, projections, a 7' welded steel figure lined with 280 synchronized strobe lights, (8) one cubic ft burning houses, and an 18' staircase structure. A cellist playing Bach sonatas, as a dialogue as well accompanying projection visuals and all visual objects.*

***Performance Location:***

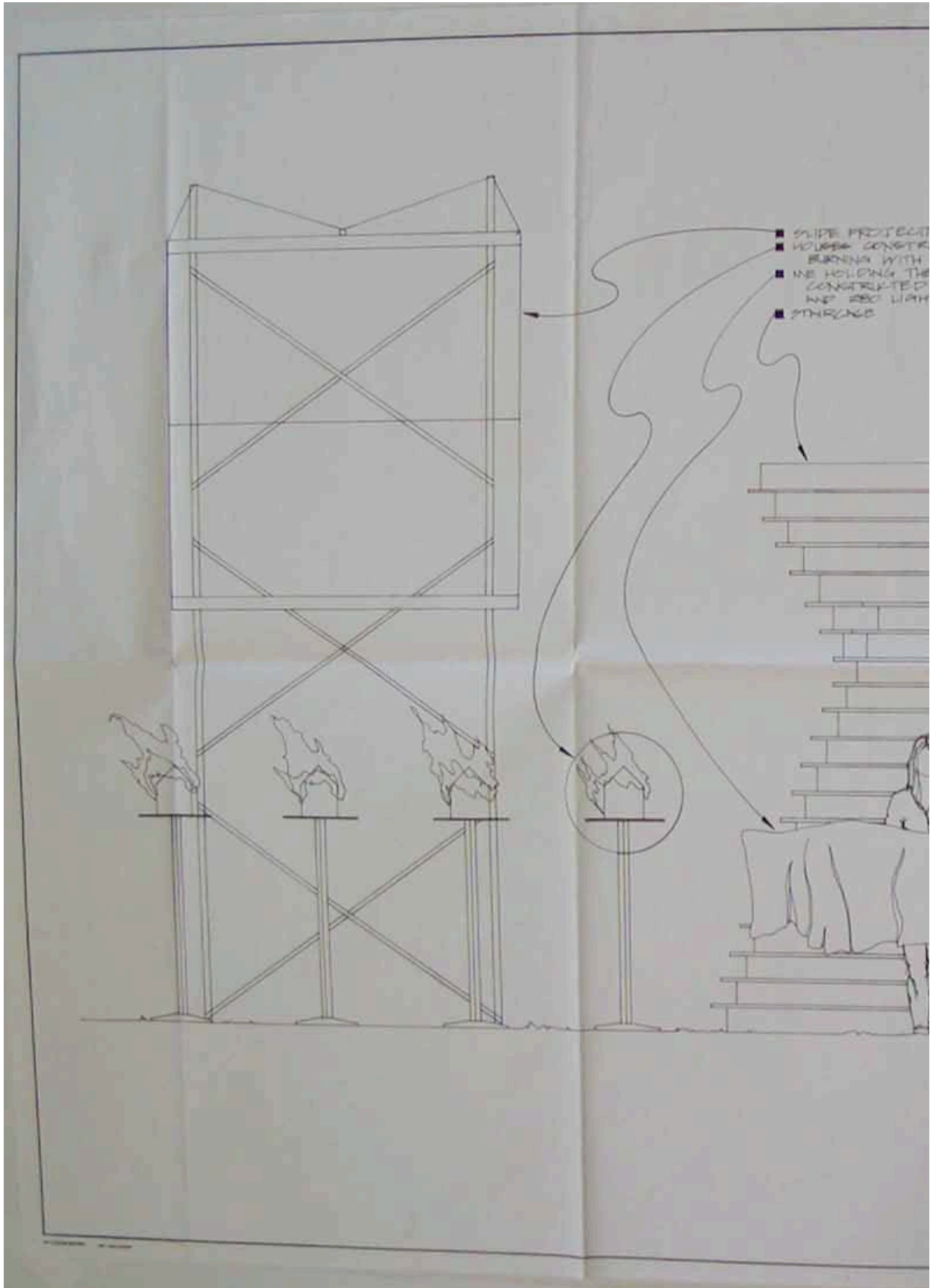


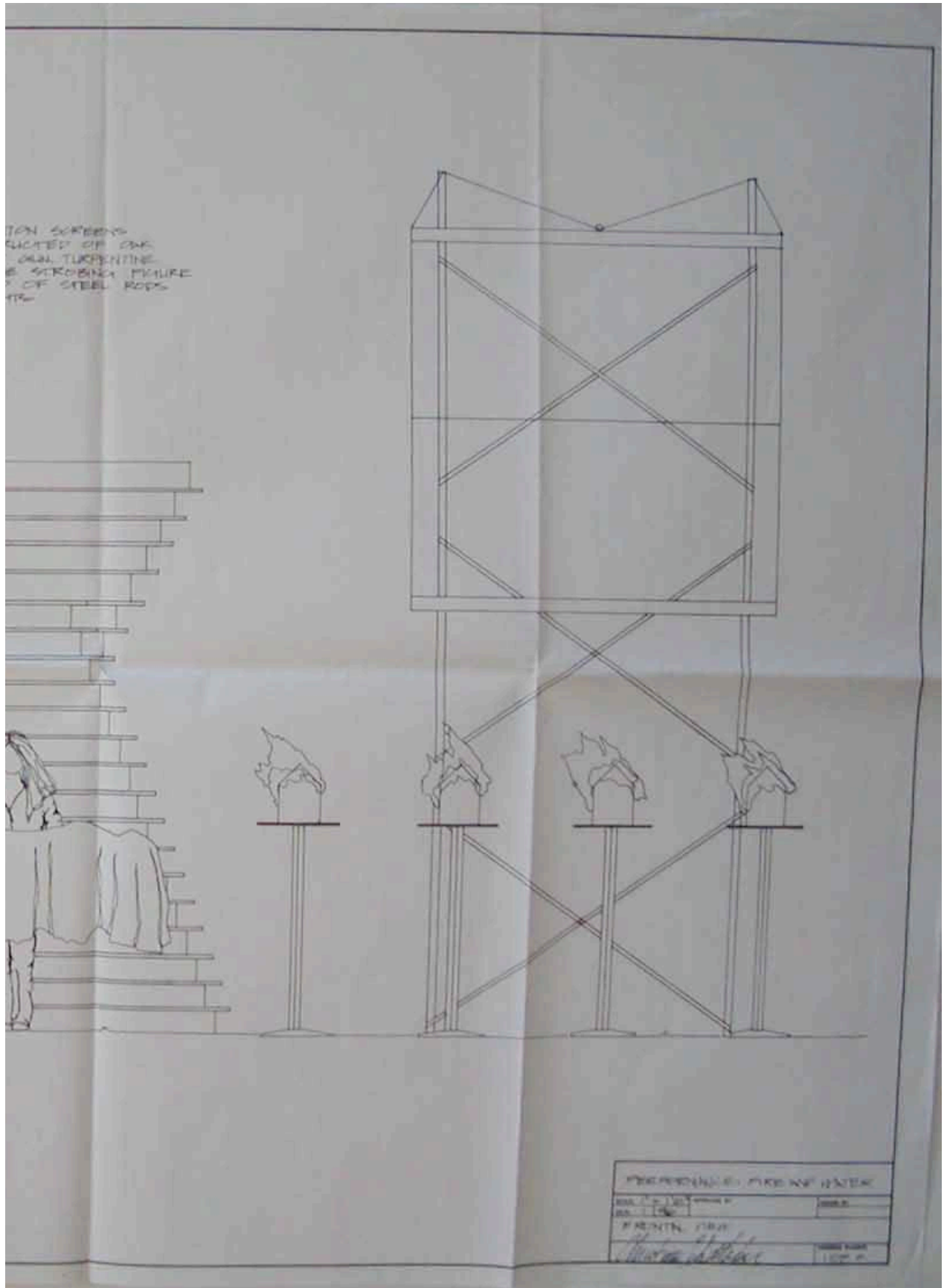


**Fire and Water:**

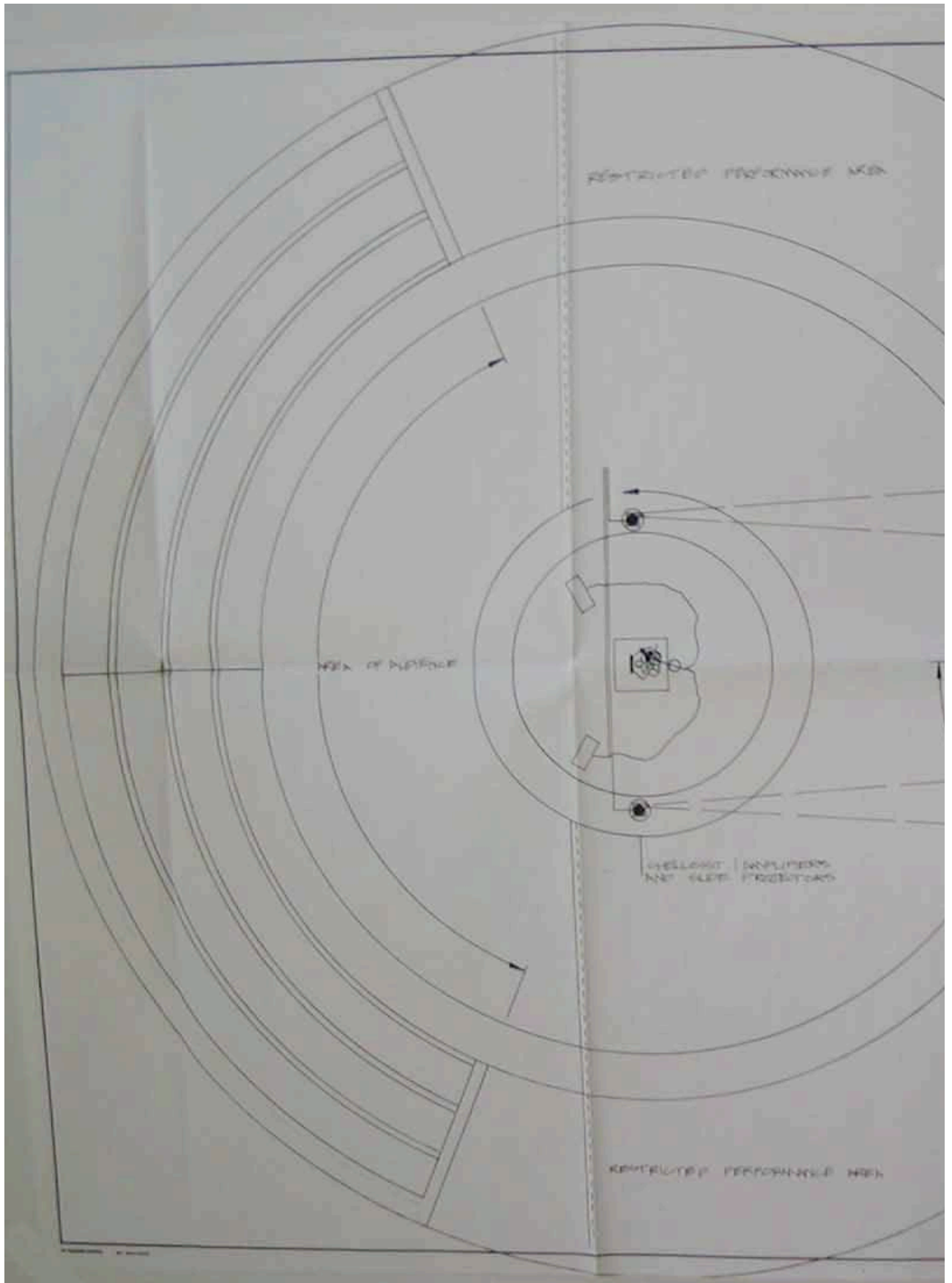
*A 43-minute performance piece composed of a cellist two large-scale projections screens, projections, a 7' welded steel figure lined with 280 synchronized strobe lights, (8) one cubic ft burning houses, and an 18' staircase structure. A cellist playing Bach sonatas, as a dialogue as well accompanying projection visuals and all visual objects.*

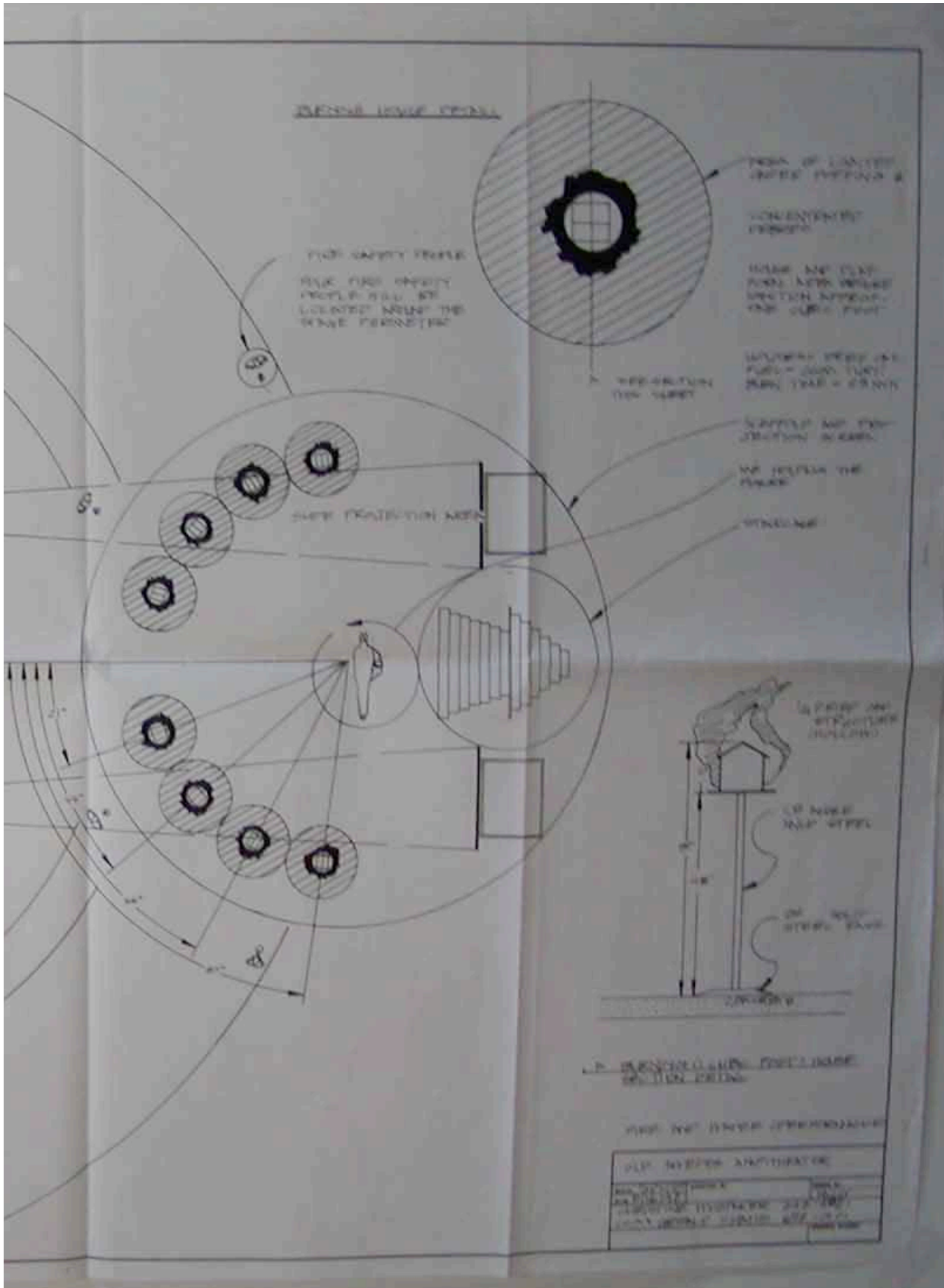
Frontal View: Fire and Water performance.



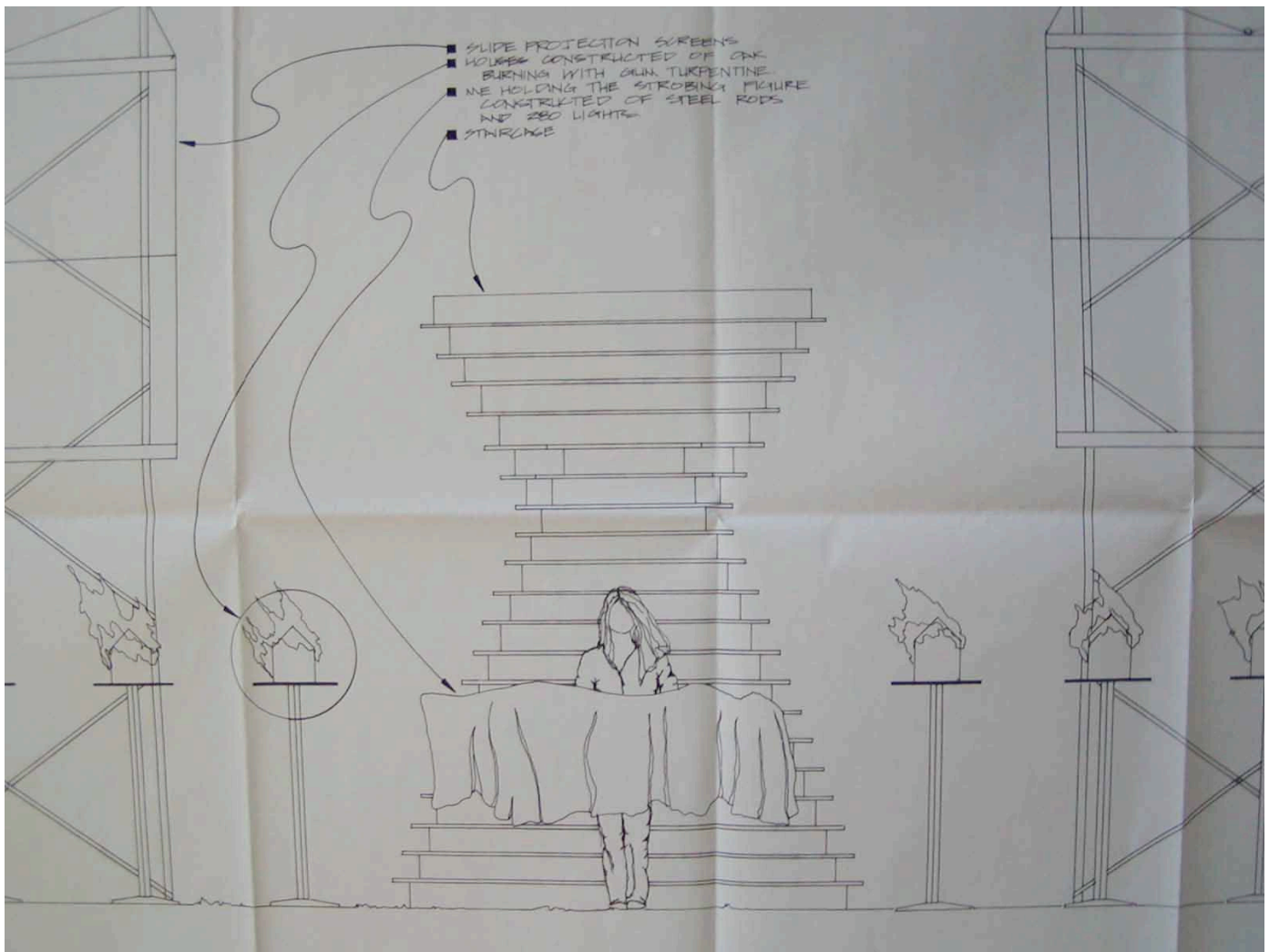


Top View: Fire and Water performance.





**Frontal view: of the performance staircase, houses and projection screens.**

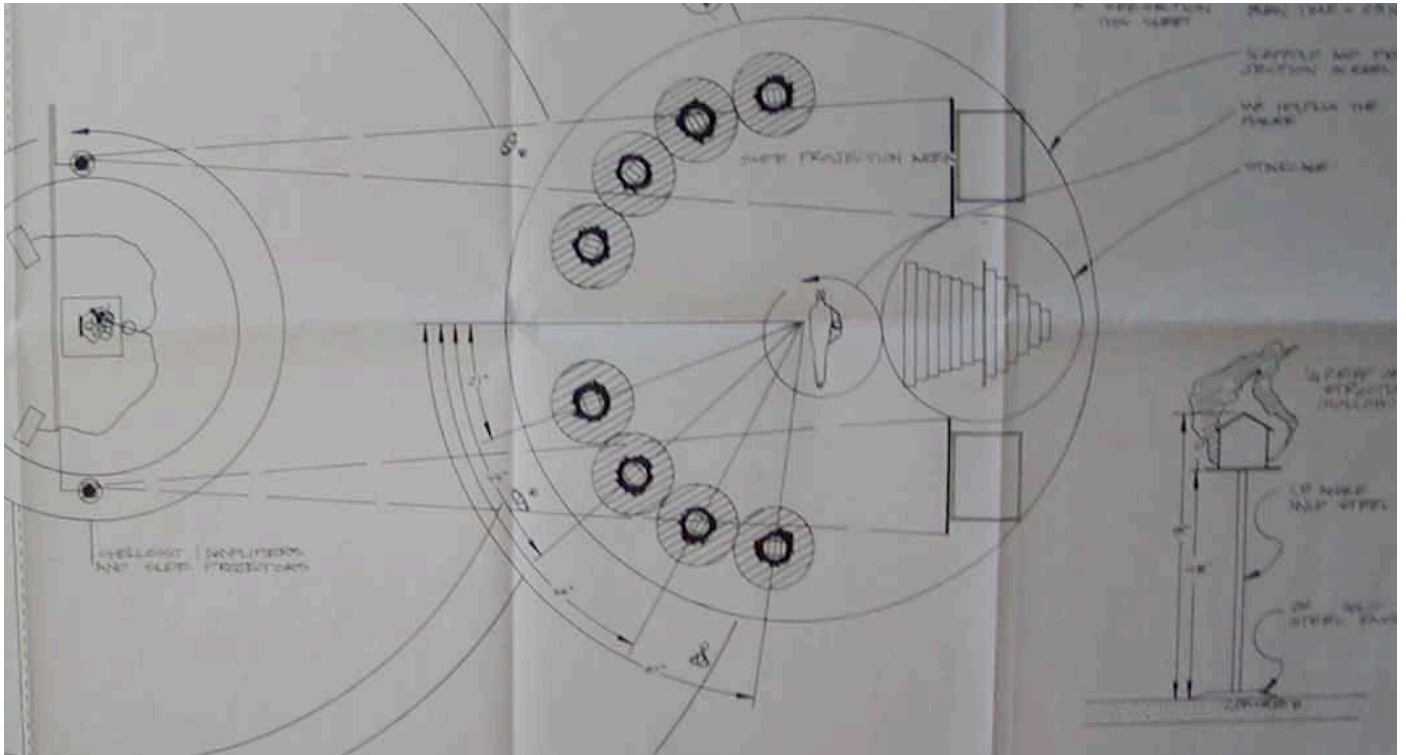


**Pictured below is the figure that was built for the performance. It has 280 lights that can be set to strobe in synch with the sound being played during the performance**

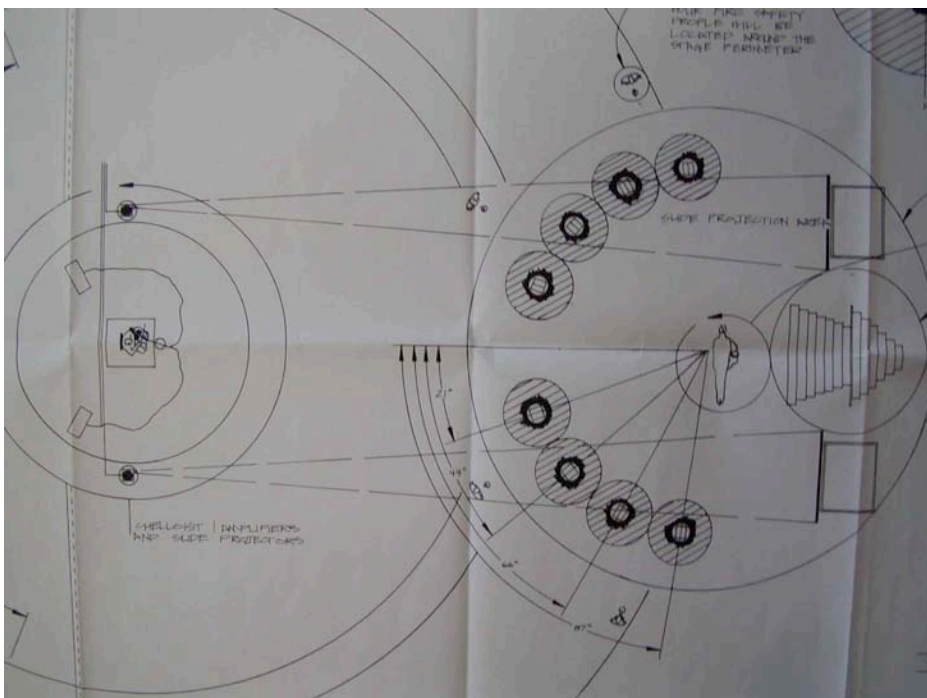




Pictured top view of projectors and projection pathways.



Below is a detail of the top view drawing-indicating placement of the performance elements.



**Actual list of Performance elements that will be temporarily installed to the sight:**

1. Two set of (three tears of scaffold) with 8ft. sq. projection scrims attached to each face.
2. A 16' Two way sectional stair case 12 ft. is solid and the upper 4' section is a breakaway section.
3. Eight 1 cubic ft. houses that will be burned.
4. A 7' steel figure loaded with 280 strobe lights constructed of ¼" steel, wrapped in a loose cotton armature. The figure can be adjusted in its rate of synchronization with the cellist (it will synchronize to the rate of the musical beat). Black electrical cords will accompany the figure.
5. Two synchronized slide projectors; two slide fader units to control the projectors, two projector stands and two projection scrims.
6. Sledgehammer for breakaway staircase.
7. Safety cable for scaffold security (if necessary)
8. Performance suit - red.
9. Information stands for the audience will hold texts explaining the event.

**Safety elements related to fire:**

1. Four sets of manned fire extinguishers in case of fire sinter burn off the approximate area of sinter fall about is within a four ft. parameter of the houses, most of the sinters stay on top of the platforms.
2. Safety markers and non-stick construction tape to mark off performance areas and keep the audience safe.

**Things that I might need for the performance:**

1. Amplifier, two mikes, XLR cables and two mike stands to amplify the cellist
2. A few helpers for assist in show set up and take down, and help with ushering the audience.
3. Portable heater for cellist if necessary.
4. Lighting and a lighting technician.

**Projected performance Budget:**

1. Cellist performance fees and transportation costs
2. Seven complete sets of scaffold and cross walks (two for the towers and one for cellist structure).
3. Audio amplification equipment, microphones, speaker systems and XLR cables (if they can't be supplied they will need to be rented).
4. Documentation
  - a. Photographer
  - b. Video grapier

**Misc. materials:**



**Fire and Water projected text short example:**

This is a small demonstration to the poetic text. A Short, the actual text in its entirety follows this page. Each sentence will be divided so that the sentence streams across both projections screens simultaneously. In order to do this the projectors will be synchronized to run together in both timing and frame change.

The projections text run as follows half of the verse will be projected on the left screen (facing the audience) and the second half on the right. The sentence detailed:

*I thought about Freedom... and what it meant to be free.*



**Short example of the text is listed below:**

*Fire and Water burn... together in eternal unity.*

*One destroys and purifies... the other cleanses and crystallizes.*

*Fire burns passion energy... water tranquility, serenity.*

*A white house stands before me... engulfed in flames.*

*I hear nothing... I am paralyzed.*

*The fire burns inside of me... as what I thought was my life was taken.*

*Moving in dreams, voices, and visions... cold environments surrounded me.*

*Years have marked the trail... yet I still don't where my life went.*

*Who am I today... a blade of grass?*

*The sun is fire... Water purity's the earth as the rain falls.*

*As the rain falls... I will dream of a place I may never know.*